



Smisby Newsletter - Autumn 2013

Issue 40



"Smisby Parish reflected on another hugely successful Community Event this year with its Summer Festival at the end of June.

The weather Gods looked down on the village more sympathetically this year which allowed a lot of the activities to take place up on The Jubilee Grounds.

The Festival began again this year with the Smisby Scarecrow Trail. Albeit a smaller number of participants, the quality was not diminished with the 'At The Movies' theme.



An outstanding entry of note came from Sheila & Ian from The Orchard with their tremendous recreation of the iconic scene from the film ET.

They were only surpassed by the genius of the Spielberg Director entry from Julie & Peter from The Mill who picked up this year's Winning Entry and the Smisby Arms Voucher.

The Jubilee Grounds, decorated in all its glory with Bunting and Marquees then hosted the 'Party

in the Park' with a shared table throughout the afternoon.

An exciting Tug-of-War series provided an opportunity for Chapel Street to show its superiority in this old village past time beating its Main Street rivals in a classic best of 3 head to head encounter that went down to the important decider.

Later on the festivities continued with a Barn Dance in the Village Hall before a resounding camp fire sing-a-long with Hazel; which saw some interesting percussion instrument accompaniment from all ages!

The evening brought out only the 'Die Hard' campers; braving the 'Great Outdoors' with a few Dad's and children enjoying the excitement of a Camp out.



Sunday started with bright sunshine and a hearty Father's Day BBQ Breakfast extravaganza, before the laughter continued with a "Dad's in the Stocks" interlude; with Children taking great delight in getting revenge of many years over their Dad's with a good old fashioned soaking with cold wet sponges. The hilarity continued with a 'Wellie Wangling' competition which presented some extraordinary sights and attempts which had people running for cover with wellies somehow being thrown backwards into the assembled gallery.

Of course the final play of the day saw The Boys beat the

Girls again at Rounders to keep the bragging rights for yet another year....

The great idea of a Penalty Shoot Out competition hosted by Jake Whitby and Sam Hewitt even saw some of our young parishioners successfully raise money for The Air Ambulance Charity along with all the proceeds from the Scarecrow Trail.

A huge thank you again to all those who helped this year with the organisation behind the scenes. Most of all, hats off to those who chose to come along and embrace the joy that village life can bring and enjoy the community spirit that exists within this wonderful village. In amongst very busy lives, it always nice to take time out to get to know your neighbours.....

We will endeavour to do something again next Summer as a Parish with any ideas welcomed for the Village celebrations.



Parish Council NEWS

Items from the September Parish Council Meeting

New Parish Council Clerk

Following the resignation of Parish Clerk, Neil Jenkinson, the Council is delighted to confirm the appointment of Amanda Hancock as his replacement. Smisby Parish Council would like to thank Neil for his significant contribution during his tenure as Clerk and wish him all the best for the future. Amanda's contact details can be found at the back of this newsletter, but the Clerk can always be contacted at the Parish Clerk's email address:- **smisbyparishclerk@gmail.com**

Chapel Street Works

You may be aware of the verge strengthening works on Chapel Street which resulted in the bank retaining wall of paving slabs. The Parish Council have complained to DCC Highways Department about how out of place these are in a conservation area such as Smisby Village. After a site meeting DCC have agreed to remove these slabs and re-grade the bank as was originally agreed at the initial site meeting. These works will necessitate the closure of Chapel Street from **Monday 30th September to Friday 4th October**.

Dog Fouling

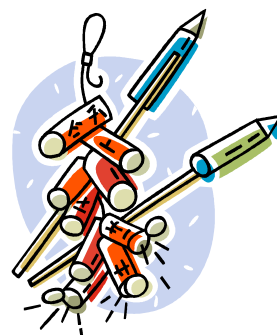
Dog fouling continues to be an issue within the Parish, for your information SDDC have designated all land in South Derbyshire accessible to the Public under The Dogs (Fouling of Land) Act 1996. The designated land includes roads, pavements, footpaths, school playing fields, sports fields, parks and other open spaces. It is an offence for a dog owner not to clean up after their dog in these areas. Failure to comply can result in a prosecution and fine up to £1,000. It is no defence to claim ignorance of the dog's actions. Allowing your dog out unescorted to foul in the owner's absence is also an offence under the Act.

Fireworks

As bonfire night approaches the Parish Council would like to remind parishioners of the legislation relating to the use of fireworks.

Did you know?

- It is an offence to let fireworks off during night hours (11pm to 7am), except on Bonfire Night (midnight), Diwali, New Year, and Chinese New Year (1am).
- It is against the law to carry fireworks in public if you're under 18, and to sell fireworks to anyone under the age of 18.
- It is an offence under the Explosives Act 1875 to tamper with or modify fireworks



Street Lighting

It was brought to the Parish Council's attention three street lights that have been affected by the energy saving measures by DCC, causing concern over the lack of illumination between midnight and 5:30am on Chapel Street by the loss of two lamps, and the complete loss of illumination on part of Annwell Lane by the switching off of one lamp post. The Parish Council is taking these concerns up with DCC, but also recommend those persons directly affected contact DCC on their own behalf.

New South Derbyshire District Council Recycling Scheme



SDDC are introducing a new recycling scheme, replacing the recycle boxes with Green Bins with an Inner Caddy, & Red Sacks. The new scheme starts week commencing the 16th October 2013 and the green bin and red sacks are to be put out with your Brown Bin. The main green bin takes your Aerosols, Tins, Foil, Cans, Glass, Squashed Plastic Bottles & Plastic Containers. The Inner Caddy is for Paper, Junk Mail, Newspapers, Cardboard, Phone Directories and Magazines. Red Sack for Clothes, Curtains, Rags, Shoes, Belts, Handbags, Underwear and Towels.

Currently the SDDC scheme is unable to recycle Juice Cartons (Tetrapaks), Plastic Bags, Cellophane Plastic Wrapping Packets, Bubble Wrap, Polythene, Polystyrene, Plant Pots, Sticky Tape, Nappies, Pet Waste. These items should continue to be placed in your black bin.

Landscaping and Horticultural machinery for Sale or Hire

Kilworth

Kilworth Machinery Ltd
Anwell Lane, Smisby
Tel: 01530 412690
www.kilworthmachinery.co.uk

- Rotavators
- Tractors
- Mowers
- Log Splitters
- Saw Benches
- Sweepers



NEWS from St James Church

The Bishop's Medal

Congratulations to Pat Barnes and Hazel Salt who have been awarded the Bishop's Medal for their many services to the community.

Patronal Festival

Our Patronal Festival was celebrated on Sunday 28th July.

We were delighted to welcome Ticknall choir who led the singing and Bishop Humphrey, from Repton, who ministered to our souls. The church was beautifully decorated by Pat and her team who also sent us away refreshed in body.

The Church Clock

Hopefully by now everyone will have noticed the new clock face.

Overseeing the repair of the stonework behind the clock and the restoration of the clock face itself has been an unusually protracted and frustrating process and we are grateful to Gary Margerrison our Church Warden for his efforts on our behalf.

Baptisms

Over the summer there were two baptismal services;

7th July 2013; Lily Pearl Robinson, Kitty Olivia Pegg, Lenny James Pegg

17th Aug 2013; Lucas James Dean, Sian May Dean

Services

This year's **Harvest Festival** is on **Sunday 6th October at 5:30pm.**

The Service will be followed by a Buffet Supper in the Church.

Remembrance Day Service - Sunday 10th November at 5:30pm.



Indulgence Evening Ladies Only!

Friday 1st November from 8pm

Hosted by Smisby Ladies in the Village Hall and in aid of Macmillan Cancer Care. So why not come and enjoy a night of shopping, pampering and relaxation, with entertainment from 'The Wedding Singer' along with a **Hot Meal** and **Complimentary Drink**. £10 per ticket.

Please contact Charlotte from Maycliffe on Chapel Street at;

charlottebeaumont@hotmail.com for tickets.

Only 100 tickets available with first come first served.



Ivanhoe Countrystore

Remember to stock up on dinner for your best friend!



BURNS
Developed by a Veterinary Surgeon
The Holistic Approach to Health & Nutrition

JAMES WELLBELOVED



And don't forget the **FRONTLINE**

- ♦ Friendly service and advice on a wide range of pet foods to suit all diets ♦
- ♦ Easy free parking ♦

Ashby Road - Boundary - 01283 212300

Easy Free Parking - Friendly service and advice



Smisby WI and Ashby Art Club

invite you to a

Coffee Morning & Art and Crafts Exhibition

30th November 2013 starting at 10am

Ashby Art Club members will hold an exhibition and sale of their paintings and drawings.

Smisby WI will provide home made refreshments, an exhibition of WI crafts and other Smisby WI activities, also jewellery, plant, book and preserves stalls, together with a tombola and raffle.

These two clubs are based in the village hall. Come and see what they do!

Free entry, everyone is welcome



Smisby Allotment Association

If you are interested in an allotment plot, or know of someone who is looking for space, then please contact: smisbyallotments@yahoo.co.uk.

Chairman: Simon Barnett; 01530 412491; Vice Chair: Sue Kendall; Secretary/Treasurer: Sarah Rushman



Corporate wear & Promotional Items

We are suppliers of corporate clothing and promotional items in all formats for office, industrial, local government, schools and clubs.

sales@mannocks.co.uk

www.mannocks.co.uk

Tel: 01530 411066

Fax: 01530 411062

BlueBell Arboretum & Nursery, Smisby

*Specialist Growers of Rare Trees,
Shrubs & Climbers.*

Opening times:

March to October: 9am to 5pm (Sundays 10.30am to 4.30pm)

November to February 9am to 4pm (Closed on Sundays)

We are closed from December 24th to January 2nd

Tel 01530 413 700 Fax 01530 417 600

www.bluebellnursery.co.uk

Useful Smisby Village Contacts:

Parish Councillors: Steve Hewitt, Chair (07908 620002); Sarah Rushman; Vice Chair; Mike Smith; Mark Parnham; Simon Barnett; Amanda Hancock, Parish Clerk (07969 814260), smisbyparishclerk@gmail.com

Please contact the Parish Clerk if you would like to include anything in the next Parish Newsletter

South Derbyshire District Councillors: Michael Stanton, michael.stanton@south-derbys.gov.uk, Tel-07768 010251;

Peter Smith, peter.smith@south-derbys.gov.uk, Tel-07894 338129

Derbyshire District Councillor: Linda Chilton, Linda.chilton@derbyshire.gov.uk

The Parochial Charity: Trustees: Barbara Ball (01530 416411), Jeff Barnes (01283 217319), Simon Barnett (01530 412491), Andrew Parnham (01530 411202) plus Sheila Heap as Clerk to the Trustees (01530 414179).

Village Hall Committee: Chairman, Ed Kendall sekendall@tiscali.co.uk; Secretary, Alex Aherne (01530 416949); Bookings Secretary, Janet Glover (07507 789292).

Smisby Church: Churchwardens: Gary Margerrison (01530 414453) and Carol Morgan (01530 411314).

Forthcoming Parish Council Meetings; Held on Tuesdays @ 7.30pm in Smisby Village Hall. The Public & Press are Invited to attend. 12/11/2013, 14/01/2014, 11/03/2014 & 15/05/2014 which will be the Parish Council's AGM; preceded by the Annual Parish Meeting at 7.00pm, where local community groups can present an overview of their activities during the previous 12 months.